

WHICH GAME FIRST?

NAME _____ JCR _____

PRINCIPLES

Principle of original horizontality

Sedimentary strata are horizontal, or nearly so, when deposited. Strata that are not horizontal have been deformed by movements of the earth's crust.

Principle of superposition

In any section of undisturbed sedimentary strata the oldest stratum is at the base and the youngest is at the top. The order of deposition is from the bottom upward.

Principle of cross-cutting relationships

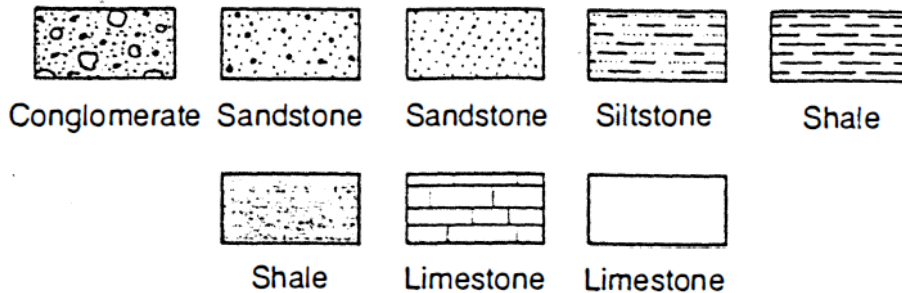
A rock body (or feature) that cuts across another rock body (or feature) is the younger of the two.

Principle of inclusion

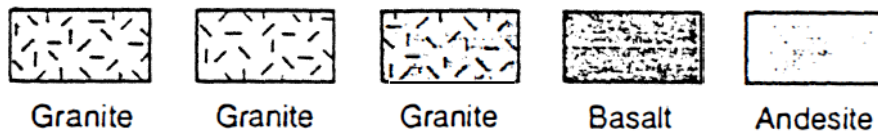
A rock body that contains inclusions (unmelted fragments, boulders, etc. from pre-existing rock) is younger than the rocks that the inclusions came from

KEY TO SYMBOLS

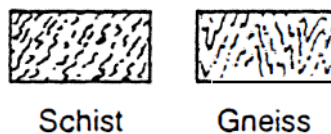
Sedimentary rocks



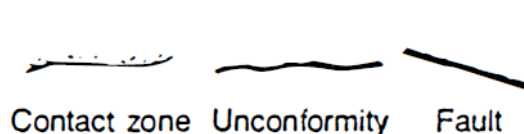
Igneous rocks



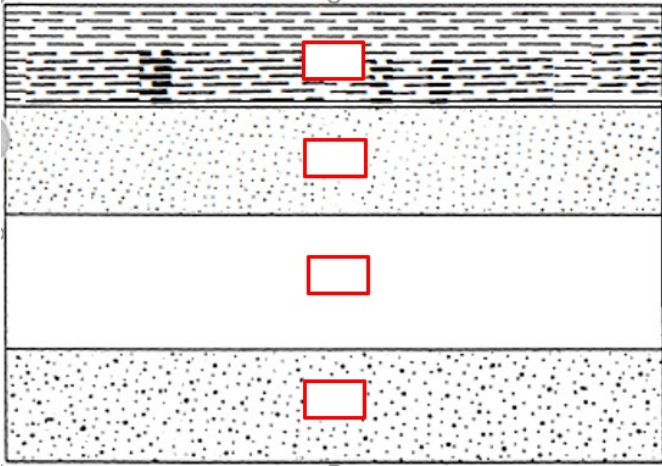
Metamorphic rocks



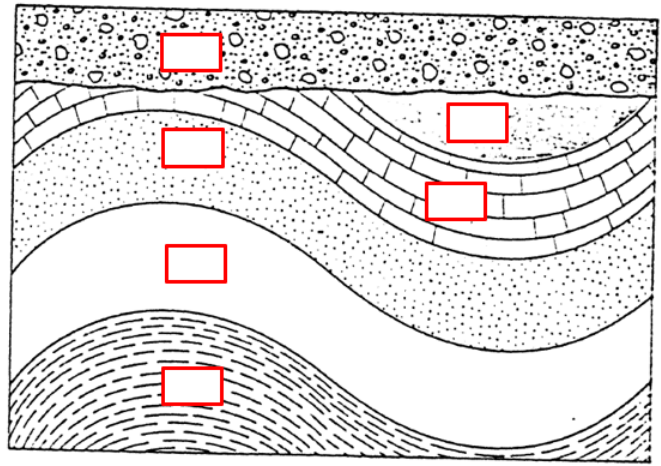
Other features



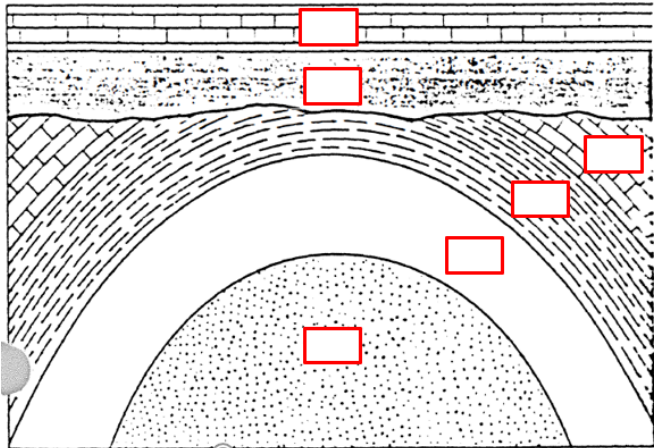
A



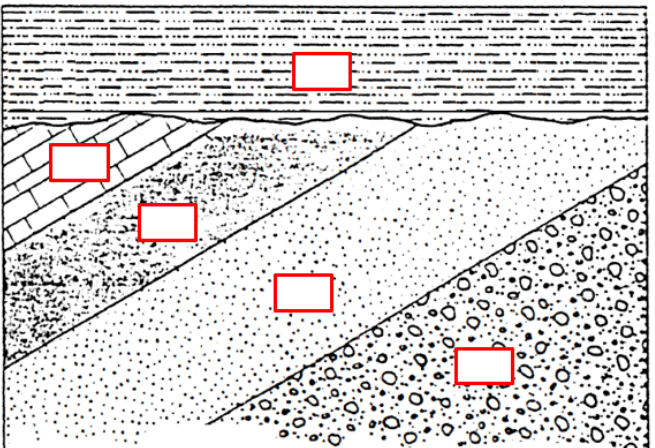
B



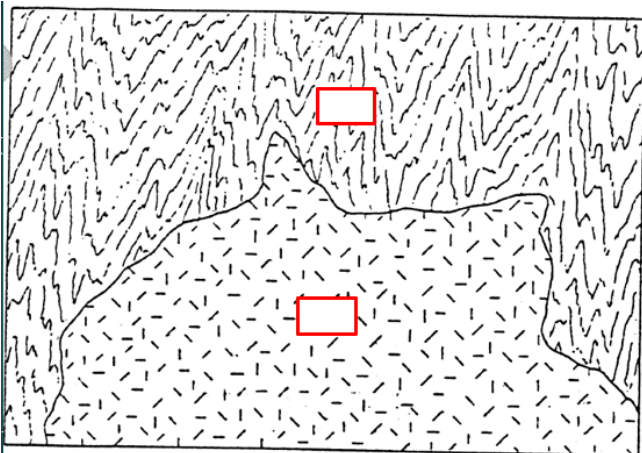
C



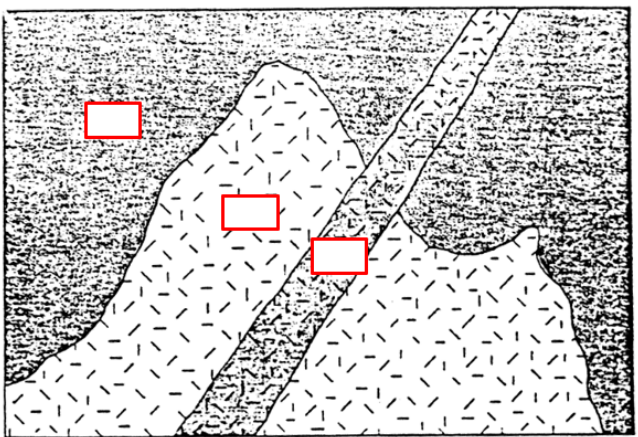
D



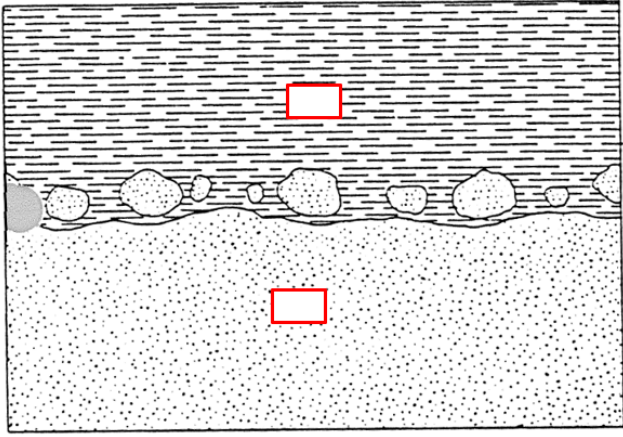
E



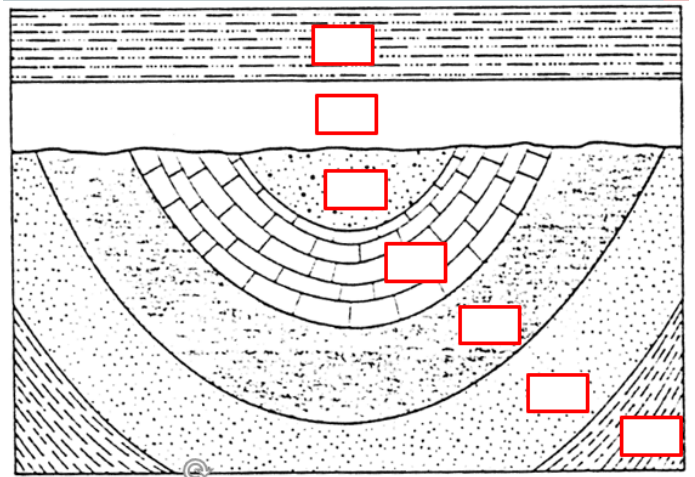
F



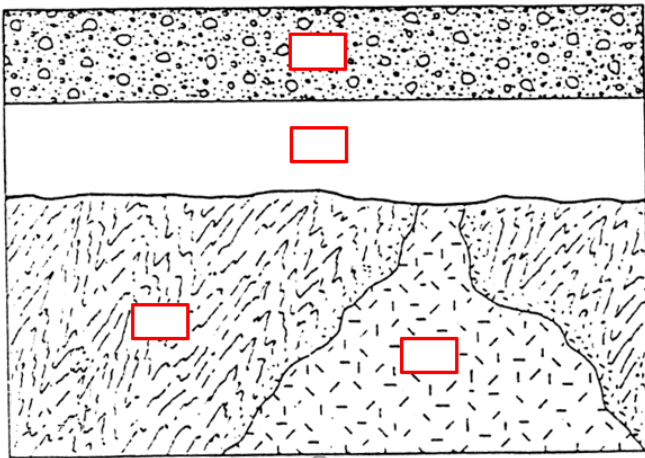
G



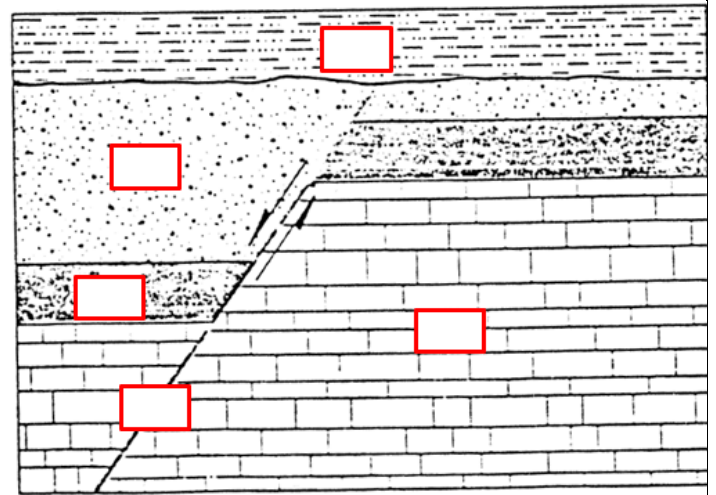
H



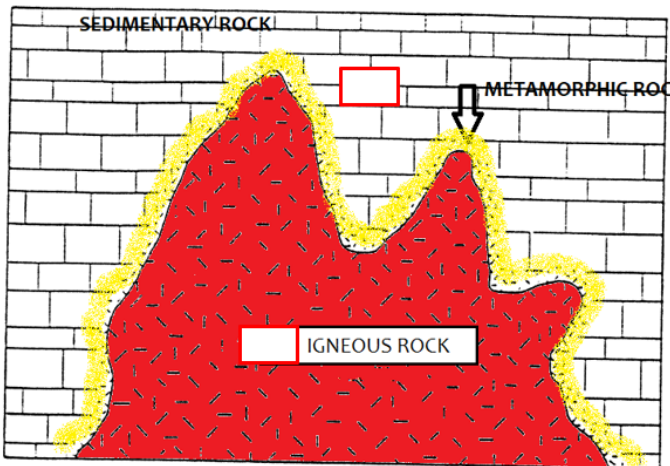
I



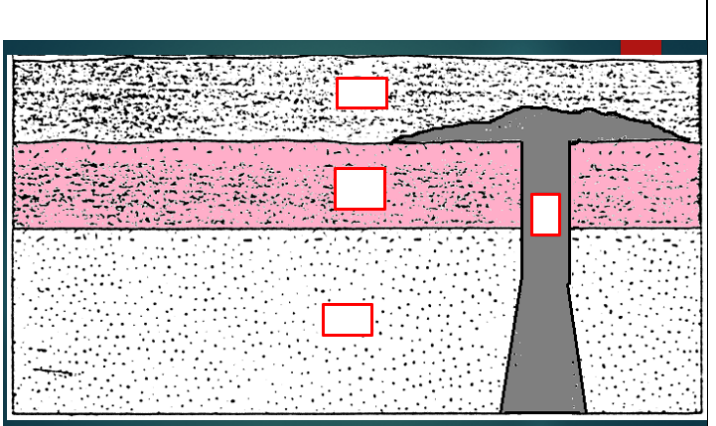
J



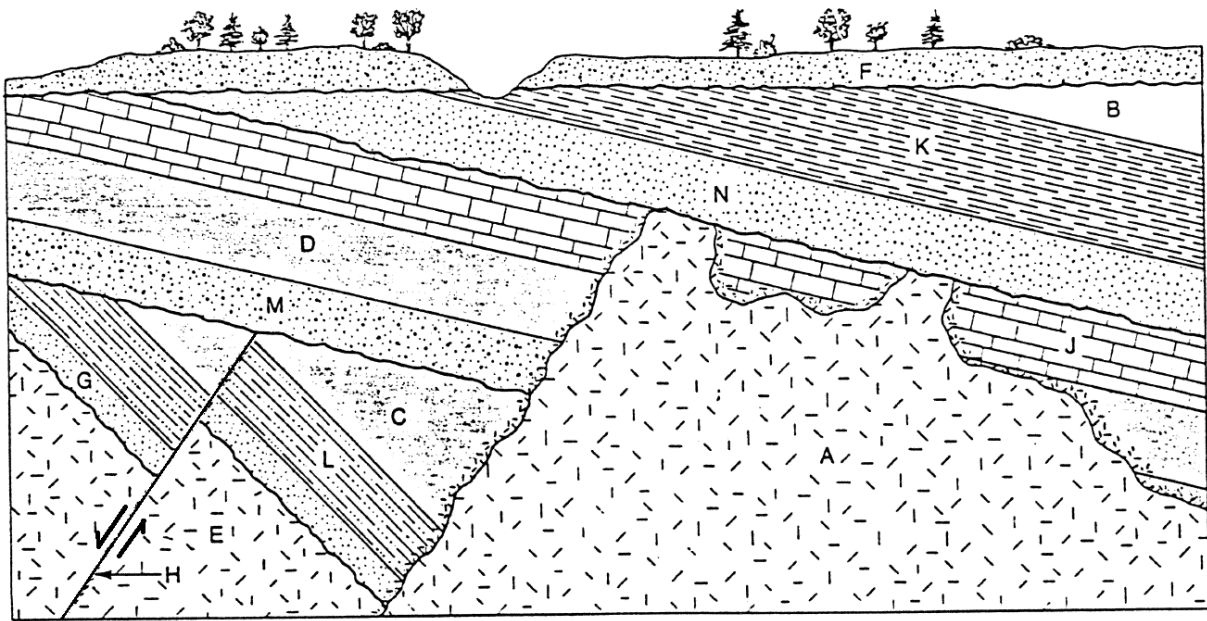
K



L



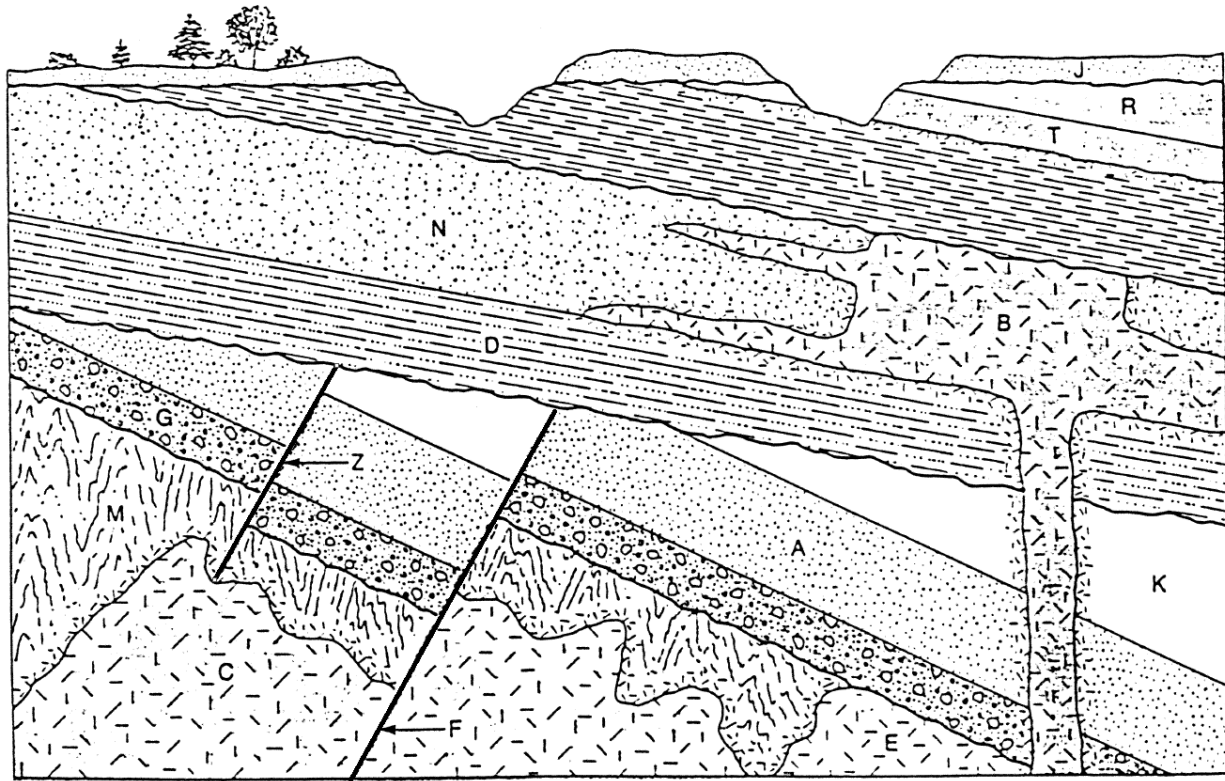
M



Youngest

Oldest

N



Youngest

Oldest