

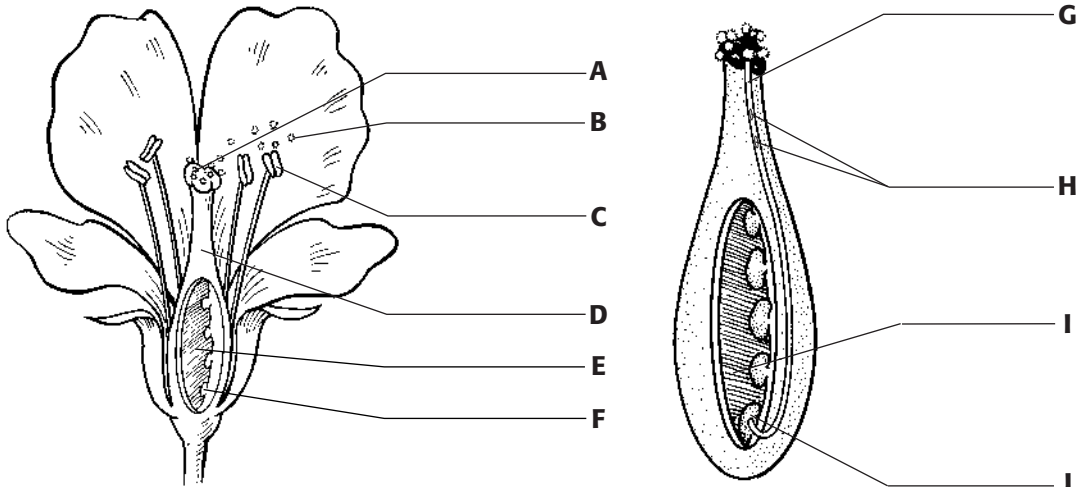
Section 2 Plant Processes ch 5

Section: Reproduction of Flowering Plants

- _____ 1. The largest and most diverse group of plants is
- prairie grasses.
 - trees.
 - flowering plants.
 - shrubs.

FERTILIZATION

Match the labels to the parts of the drawing. Write the letters in the spaces provided. Some labels may be used more than once.



- | | |
|-------------------------------|----------------------|
| _____ 2. anther | _____ 7. pollen tube |
| _____ 3. ovary | _____ 8. sperm |
| _____ 4. ovule | _____ 9. stigma |
| _____ 5. ovule containing egg | _____ 10. style |
| _____ 6. pollen | |
11. When pollen is moved from anthers to stigmas, _____ takes place.
12. When sperm fuses with the egg inside an ovule, _____ takes place.

Directed Reading A *continued*

FROM FLOWER TO FRUIT

13. After fertilization takes place, the _____ develops into a seed.

14. After fertilization takes place, the _____ becomes a fruit.

FROM SEED TO PLANT

15. What is a dormant seed?

16. Define the word *germination*.

17. What three things do seeds need in order to sprout?

3pts

OTHER METHODS OF REPRODUCTION

Match the correct definition with the correct term. Write the letter in the space provided.

_____ 18. above-ground stems from which new plants can grow **a.** plantlets

_____ 19. tiny plants that grow along the edges of a plant's leaves and fall off and grow on their own **b.** tubers

_____ 20. underground stems from which new plants can grow **c.** runners

Skills Worksheet

Section 3 Plant Processes ch 5

Section: Plant Responses to the Environment

1. Name three stimuli to which plants respond.

3pts

PLANT TROPISMS

2. What is a tropism?

3. What is a positive tropism?

4. What is a negative tropism?

For each description listed, write whether it is an example of a positive tropism or negative tropism.

_____ 5. plant growth in response to light

_____ 6. shoot growth in response to gravity

_____ 7. root growth in response to gravity

Directed Reading A *continued*

8. A change in the direction a plant grows that is caused by light is called _____.
9. Plant growth that changes in response to the direction of gravity is called _____.

SEASONAL RESPONSES

10. What would happen if a plant bloomed during a cold winter?
- _____
- _____
11. How do plants living in areas with cold winters detect the change in seasons?
- _____
- _____
- _____
12. Plants that flower when nights are long are called _____.
13. Plants that flower when nights are short are called _____.
14. What are the characteristics of evergreen trees?

2pts

15. What are the characteristics of deciduous trees?

2pts

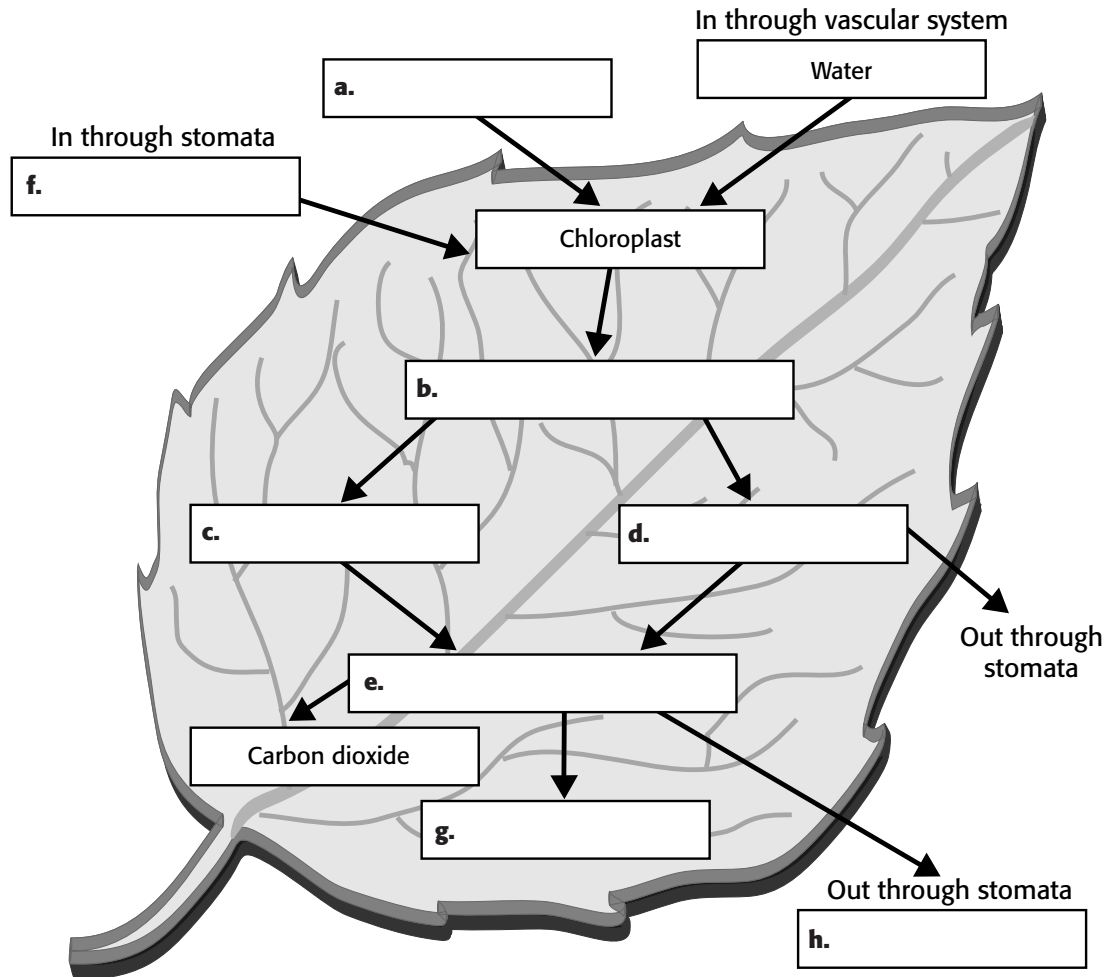
Skills Worksheet

Reinforcement

A Leaf's Work Is Never Done

Complete this worksheet after you finish reading the section "Photosynthesis."

A plant makes food in its leaves. Complete the outline below by filling in the blanks in the diagram with the words at the bottom of the page.



Words

- photosynthesis
- cellular respiration
- sugar
- carbon dioxide
- water
- oxygen
- sunlight
- energy

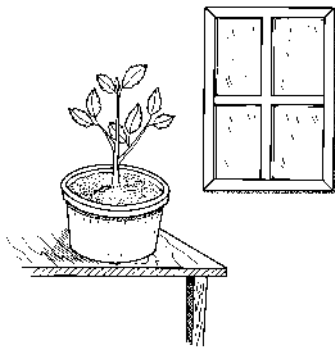
Skills Worksheet

Reinforcement**How Plants Respond to Change**

Complete this worksheet after you finish reading the section "Plant Responses to the Environment."

Although plants don't walk and talk, they do respond to stimuli in their environment. Plants respond to stimuli by growing in a particular direction. Plant growth away from a stimulus is a negative tropism. Plant growth toward a stimulus is a positive tropism.

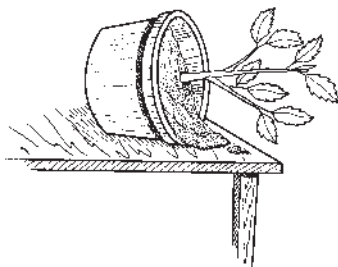
1. The plant shown below has just been moved next to a window from a room with no direct light. Sketch what the plant will look like in a few days.



In a few days

2. Phototropism is a change in the growth of a plant in response to light. Is phototropism positive or negative?

-
3. The plant shown below has just been tipped over on its side. Sketch what the plant will look like in a few days. (Hint: The plant will respond to gravity.)



In a few days

4. Gravitropism is a change in the direction of the growth of a plant in response to gravity. Is gravitropism of most shoot tips positive or negative?